

THE EAST
NORTHAMPTONSHIRE
COLLEGE

FERRERS ■ HUXLOW ■ RUSHDEN

Prospectus 2019

Three Schools
One Vision of Excellence

Heads of Sixth



Mrs Helen Prince
The Ferrers School



Mrs Jackie Holmes
(Dean Ashurst – Acting Head of Sixth)
Huxlow Science College



Mr Paul Chapman
Rushden Academy

THE EAST NORTHAMPTONSHIRE COLLEGE

FERRERS ■ HUXLOW ■ RUSHDEN





**A long and
excellent
tradition of
success**

Welcome to The East Northamptonshire College

Combining the strengths of three schools at post-16, we offer a wide range of courses and opportunities to all students in the East Northamptonshire area.

We have an excellent tradition of examination success in A Level and BTEC courses and year-on-year our students gain places at top universities including Oxford and Cambridge. We are very proud that last year our results topped the county league tables. However, we believe that being in the sixth form is not just about gaining academic qualifications.

All our students follow a wide-ranging PSHE, careers and enrichment programme and all Year 12 students are encouraged to play an active role in the wider community.

Social activities, residentials, public speaking, peer mentoring, work experience, university visits, overseas visits, theatre trips and sporting competitions are a few examples of the things our students have taken part in this year. This booklet is designed to give you a detailed description of the courses on offer. Choosing the right place for your post-16 study is an extremely important decision to make and we aim to provide you with a high quality education to suit your needs.

Students who choose to study here will enjoy their time with us, and will feel valued, challenged and supported in their ambition to achieve the best they can.



Elaine Brooker
Director
The East Northamptonshire
College
(Based at Rushden Academy)

To find out more about the courses on offer and to speak to staff and students currently on post-16 courses we invite you to our information evening.

**Post-16 Information
Evening:**

The Ferrers School

**Thursday 11th October
2018**

5:30 - 8:00pm

**We look forward to
seeing you there.**

	Entry Requirements	What we offer you	Pathways	Next steps
Platinum	A minimum of 5 GCSEs at grade 7 or above including mathematics and English language	Extensive choice of A level subjects EPQ Targeted support for Oxbridge applications University Summer School opportunities Sports leadership Award D of E Award University visits and Open Days Support for "Russell Group" applications High quality CIAEG Support form an academic mentor Work shadowing Sports Leaders Award	3 or 4 A Levels Facilitating subjects are available on this pathway	Oxford/Cambridge "Russell Group" universities Level 3 Apprenticeships
Gold	A minimum of 5 GCSEs at grade 5 or above including mathematics and English language	Extensive choice of A level subjects EPQ University Summer School opportunities Sports leadership Award D of E Award University visits and Open Days Support for "Russell Group" applications High quality CIAEG Work shadowing Sports Leaders Award	3 or 4 A Levels Facilitating subjects are available on this pathway	"Russell Group" universities Level 3 Apprenticeships
Silver	A minimum of 5 grade 4 GCSEs (or equivalent) including mathematics and English language	Extensive choice of A level subjects D of E Award Extensive choice of A level subjects University visits and Open Days Support for university applications High quality CIAEG Work shadowing	BTEC courses Combined BTEC /A level courses or alternatives	Universities Level 3 Apprenticeships
Bronze	GCSEs at grade 3 or below	A vocational course Vocationally relevant work experience D of E Award Sports leadership Award High quality CIAEG Resit mathematics and English language Individual mentor support	Level 2 courses	Level 3 courses Apprenticeships Employment with training

Next Steps...

Throughout the sixth form we will support you with high quality information, advice and guidance. All schools have a careers programme and we organise visits to conferences, skills shows as well as trips to university open days. In Year 13 students receive extensive support with university applications or help with applying for apprenticeships or employment.

Higher Education

Certain degree courses require specific A Level subjects to have been studied. Admissions tutors at specific universities will be able to guide you on this, and the UCAS website is also helpful: www.ucas.com

What the students say...

"TENC sixth form tutors treat us all on a personal basis and do all they possibly can to ensure we achieve the best grades and get the University place or apprenticeship you want. Resources are provided throughout the year and we get lots of help and guidance."

Lewis

"The dynamics completely change when you go into the 6th Form and I love it, it's a great environment and everyone is so friendly and supportive."

Alexandra

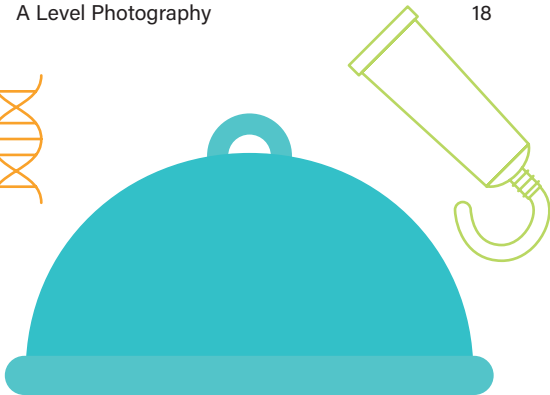


Sciences

BTEC National Diploma Science - Level 3	10
A Level Physics	11
A Level Biology	12
A Level Chemistry	13

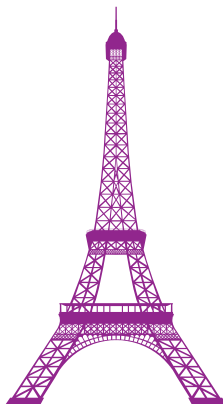
Art Design & Technology

Food Science & Nutrition (QCF) - Level 3	14
A Level Art & Design	15
Certificate in Vehicle Maintenance & Repair (Light Vehicle)	16
A Level Graphics with Materials (Design & Technology)	17
A Level Photography	18



Humanities & Social Sciences

Extended Project Qualification (EPQ)	19
A Level Geography	20
BTEC Extended Certificate/Diploma/Extended Diploma in Health & Social Care- Level 3	21
BTEC Health & Social Care - Level 2	22
A Level History	23
A Level Law	24
A Level Philosophy & Ethics	25
A Level Psychology	26
A Level Sociology	27



PE & Sport

A Level Physical Education	28
BTEC Level 2 Technical Certificate in Sport & Activity Leaders	29
BTEC Extended Certificate/Diploma/Extended Diploma in Sport – Level 3	30

Modern Languages

A Level Modern Languages French - German- Spanish	31
---	----

Creative & Performing Arts

Contemporary Music: Certificate for Music Practitioners	32
A Level Dance	33
A Level Music	34
BTEC Music Extended Certificate	35
BTEC Diploma Performing Arts - Level 3	36
BTEC Extended Diploma Performing Arts (Acting) - Level 3	37
A Level Drama	38



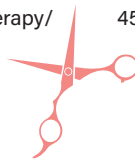
Business & ICT

A Level Business Studies	39
BTEC First Certificate in Business - Level 2	40
BTEC Extended Certificate/Diploma in Business – Level 3	41
A Level Computer Science	42
BTEC Extended Certificate in ICT	43



Hair & Beauty

Diploma in Hair & Beauty - Level 2	44
City & Guilds Diploma in Beauty Therapy/ Diploma in Hairdressing - Level 3	45



Mathematics

A Level Mathematics & Core Maths	46
A Level Further Mathematics	47

English & Media

A Level English Language & Literature	48
A Level English Literature	49
A Level Media Studies	50



Entry Requirements:

5 GCSEs grade 4 or above including Maths, English and Science. Other qualifications considered.

Length of Course:

Two years.

Examination Board:

Edexcel (Pearson).

Assessment:

Students will be required to complete 4 units, 3 of which are mandatory.

Double Award consists of 3 additional compulsory units and 1 optional unit.

1. Principles and Applications of Science.

Mandatory (Externally Assessed by written exam)s.

2. Practical Scientific Techniques.

Mandatory (Internally Assessed by coursework)

3. Science Investigation Skills.

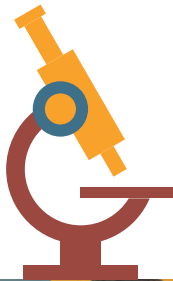
Mandatory (Externally assessed by written exam)

BTEC Nationals use a combination of assessment styles to give students the confidence and the knowledge they need to succeed in the workplace. It also offers the study skills needed to continue learning on higher education courses. This course can be taken as a single or double award. A learner's final grade is decided by their performance across the qualification, based on a combined total of points earned from assessments. However, students need to pass most (and in some cases, all) mandatory content to remain eligible for an overall qualification pass.

This BTEC Science course has elements of Biology, Chemistry and Physics and is assessed by external examination and Coursework.

How to be successful

Since this course is both exam and portfolio based, it is vital that students are self-motivated and have good coursework skills.

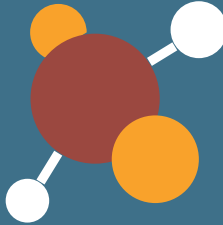


The course programme aims to:

- Provide a pathway to a higher level broad qualification in science.
- Allow access to university courses.
- Develop student ability to acquire knowledge through experimental work, carried out with due regard to safety.

Optional units (Internally assessed by coursework):

- Physiology of Human body systems.
- Human regulation and reproduction.
- Biological molecules and metabolic pathways.
- Genetic and genetic engineering.
- Diseases and infections.
- Applications of Inorganic Chemistry.
- Applications of Organic Chemistry.
- Electrical Circuits and their Applications.
- Astronomy and Space Science.



Entry Requirements:

5 GCSEs at grade 4 or above including English. At least a 7 in Science/Physics and minimum of a 6 in Maths.

Length of Course:

Two years.

Examination Board:

AQA.

Assessment:

Assessment is all exams. There is no practical coursework that will contribute to the grade but it may be reported separately.

“Physics A Level is a must for a career in science or the varied world of Engineering as well as many aspects of Medicine.”

Physics Rules the World!

Knowledge of physics opens doors to many careers and opportunities. The new course will have a strong mathematical bias and it is important that you feel confident with Maths.

Many of the units you studied at GCSE are continued such as electricity, light, magnetism and mechanics; however new areas of Physics will be introduced such as Quantum and fundamental particles. The new course may also look at the use of physics with medicine or possibly Physics with Astronomy.

Opportunities

There are many opportunities open to successful A Level students. Physics A Level is a must for a career in science or the varied world of Engineering as well as many aspects of Medicine.

All in all this is an exciting and worthwhile course. Even if you do not choose to enter the wonderful world of science based careers, you will finish this course with a better understanding and interpretation of the world around you.



Entry Requirements:

5 GCSEs grade 4 or above including a 4 in Maths, English and Higher Science.

Length of Course:

Two years.

Examination Board:

AQA.

Assessment:

100% exam.

“...the Biology course demands independent study and a solid interest in the subject. We ask for hard work and commitment from you. In return we offer caring and supportive tuition.”

What are you looking for at A Level?

- I want something practical / I want to enjoy my study / I like discovering things.
- I want to investigate things / I want a challenge / I want a good choice of career.
- I achieved good grades in Science at GCSE but I want to specialise.

If you are willing to work hard and enjoy one of the most popular A Level subjects in the country then this is the course for you. You will need to study hard with your peers and discuss your progress with staff.

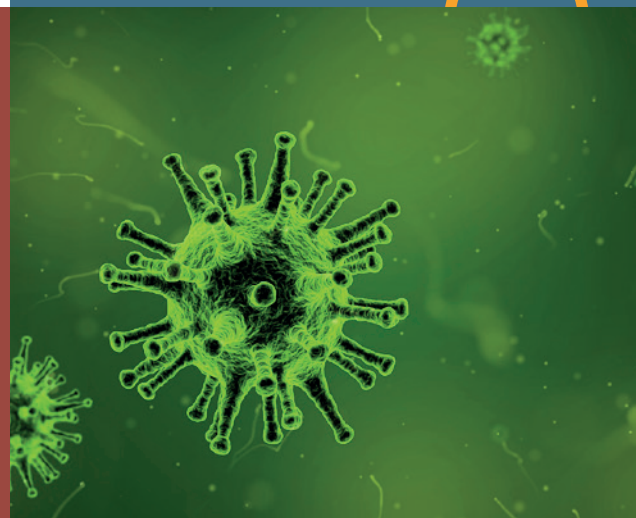
What will you get in return?

- An opportunity to extend your understanding of live science through practical work.
- A chance to explore intellectually how living things work.
- Good preparation for the challenges of further study.
- Enthusiastic teaching staff that will encourage you to discover things for yourself and develop an analytical mind.

**Interested?**

Good. Bear in mind that the nature of the Biology course demands independent study and a solid interest in the subject. We ask for hard work and commitment from you.

In return we offer caring and supportive tuition.

**Entry Requirements:**

5 GCSEs at grade 4 or above including Maths and English.

Grades 7-9 in Science strongly recommended.

Length of Course:

Two years.

Examination Board:

OCR.

“Joy may be inarticulate, but reflection is empty without understanding. There is a delight to be had merely looking at the world, but that delight can be deepened when the mind’s eye can penetrate the surface of things to see the connections within.”
P W Atkins
(Chemist)

Chemistry is a very demanding A Level course. Students need to show a high level of commitment if they are to succeed.

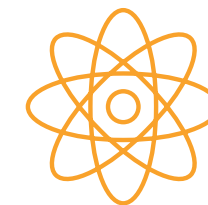
The course programme aims to:

- Stimulate your interest and enjoyment of Chemistry.
- Present Chemistry as a coherent but developing body of knowledge, principles and theories linked by unified ideas.
- Develop an appreciation of social, economic, environmental and technological innovations and applications of Chemistry.
- Develop your ability to acquire knowledge through experimental work, carried out with due regard to safety.
- Provide an appropriate course for those students who wish to continue their studies in Chemistry and other related subjects.

Chemistry is a challenging course that has links to Physics and Biology and also underlies many branches of technology.

Key Skills

Chemistry provides opportunities for key skills evidence in Communication and Information



Unit 1: Pupil practical skills.
Unit 2: Foundations in Chemistry.
Unit 3: Periodic Table.
Unit 4: Core organic Chemistry.
Unit 5: Physical Chemistry.
Unit 6: Organic Chemistry.

Entry Requirements:

5 GCSEs at grade 5 or above including Maths, English and a science and a food subject.

Examination Board:

WJEC.

Assessment:

Controlled Assessment, external assessment and practical assessments.

Cooking isn't a job... It's a passion



Why Study Food Science and Nutrition?

This is an exciting course which allows students to gain a wealth of knowledge about Food Science and Nutrition. They will have the opportunity to learn about the relationship between the human body and food as well as practical skills about cooking and preparing food.

There is a strong emphasis on practical work, making this an ideal choice for students who prefer to learn by doing.

By studying this Level 3 Certificate students will gain the required knowledge to be able to consider and seek employment at a specific level, within the food and drink sectors of hospitality and catering, food production or the food retail industry; or use the qualification to support entry to higher/further education courses e.g. BSc Food and Nutrition, BSc Human Nutrition, BSc (Hons) Public Health Nutrition, BSc (Hons) Food Science and Technology.

This qualification offers students:

- Skills required for independent learning and development.
- A range of generic and transferable skills.
- The ability to solve problems.
- The skills of project based research, development and presentation.
- The ability to apply mathematical and ICT skills.
- The fundamental ability to work alongside other professionals, in a professional environment.
- The ability to apply learning in vocational contexts.



Entry Requirements:

5 GCSEs at grade 5 or above including a 6 or above in Art and Design.

Length of Course:

Two years.

Examination Board:

AQA.

Assessment:

Component 1 Personal investigation: 60% of marks.
Component 2 externally set assignments: 40% of marks.

“Students will explore graphic media, textiles techniques, photography, digital manipulation to mention but a few.”

The aim of the course is for students to develop an understanding of the holistic nature of Art and Design.
A Level is a natural progression from GCSE.

The course helps develop practical and theoretical knowledge and understanding of relevant materials, processes, ideas, genres and styles. Skills are developed through observation, research, recording and analysis. Students will be encouraged to use their knowledge and understanding of the work of others to develop and extend thinking and inform their own work. Ideas will be generated and explored through enquiry that involves experimenting with a wide range of materials and techniques in an independent way.



Expectations

There is an expectation that students will take up the opportunity to extend their skills, knowledge and experiences through self-initiated gallery visits and extended hours activities.

During the first year of the course students will be introduced to a variety of experiences that explore two-dimensional and/or three dimensional media. Students will explore graphic media, textiles techniques, photography, digital manipulation to mention but a few.

Towards the end of the first year students will be directed to choose a suggested pathway to study for the time remaining on the course. They will follow the unendorsed element of the course which will allow the students to study in a variety of media which may include Fine Art, Graphic Communication, Textile Design, Three-Dimensional Design or Photography.

Entry Requirements:

An interest in the industry and sound functional skills.

Length of Course:

One year Level 2.

Two years Level 3.

Studied at Centurion Training - Northampton.

Examination Board:

IMI Awards Limited.

Assessment:

Online testing and practical assignments.

This qualification is primarily a Technical Level Qualification developed for schools and colleges to deliver to learners aged in the 16-19 age group and is aimed at learners with a keen interest in the motorsport vehicle maintenance and repair industry.

Along with developing transferable skills required to work within a number of job roles within the motorsport industry, this qualification is designed to equip students with the high level specialist technical knowledge and skills to be able to work on modern motorsport vehicles.

The qualification is assessed using a range of methods appropriate for this level of technical qualification including practical skills assessments, written assignments and online tests.

This qualification helps provide entry into employment within the motorsport industry and also onto an apprenticeship in motorsport vehicle maintenance and repair (as a recognised knowledge qualification within the SEMTA Engineering Manufacture Framework). This qualification also provides a high level of underpinning knowledge and skills which may allow progression onto some higher education qualifications in motorsport and engineering related subjects.

Underpinning Knowledge of

- Event regulations.
- Setting up motorsport vehicles.
- Inspecting a motorsport vehicle during competition.
- Diagnosis and rectification of transmission and driveline faults.
- Diagnosis and rectification of chassis system faults.

This qualification therefore supports young people to:

- Acquire transferable skills required to work within a range of job roles with both the motorsport industry and other sectors.
- Acquire a detailed and comprehensive specialist technical knowledge core, as well as providing the opportunity to develop their academic and study skills to support progression onto further qualifications and potential employment.
- Acquire advanced level specialist technical practical skills across the range of systems and components on modern motorsport vehicles to support progression into employment or onto an apprenticeship.



Optional units

- Joining vehicle components using a fusion and non fusion processes.
- Stripping and rebuilding engines for motorsport vehicles.
- Marking out, cutting, shaping and forming sheet and tube materials to fabricate motorsport components.
- Dressing engines for motorsport vehicles.

Entry Requirements:

5 GCSEs at grade 5 or above including Maths and English. 6 or above required in Graphics, Product Design or Resistant Materials. A love of graphic products is required and an awareness of Mathematical and Scientific skills are required.

Length of Course:

Two years.

Examination Board:

Edexcel.

Assessment:

Written exam and coursework.

Exploring Creativity & Sustainability

In both forms of assessment (coursework 50% and examination 50%) students will be developing their knowledge, understanding, skills and application for designing and making products.



Component One

Principles of Design and Technology (Examination – 50% of the qualification)

Written paper (2.5 hours), which is externally assessed. In this unit students develop their knowledge and understanding of a range of modern design and manufacturing practices and contemporary design issues including:

- Materials and manufacturing processes
- Factors influencing the development of products
- Health and safety in manufacturing industries
- Sustainability
- Information handling, modelling, and forward planning.

Maths and Science skills are fundamental to Design and Technology. These will also be embedded within the examination for this qualification.

Component 2:

Independent Design and Make Project (Coursework – 50% of the qualification)

This unit is a substantial design and make activity where students create a portfolio of work approximately 40 A3 pages. Students in consultation with a client, create a problem and design context and produce a range of designs which are to be developed into a final solution. They will then manufacture a scale model of the product whilst demonstrating as many workshop skills as possible. Most students opt to follow the architecture route, however, students can personalise the project whether it be product design, packaging design or even garden design!

Four part assessment:

Part 1: Identifying and outlining possibilities for design identification and investigation of a design possibility, investigation of client/end user needs, wants and values, research and production of a specification

Part 2: Designing a prototype, design ideas, development of design idea, final design solution, review of development and final design and communication of design ideas

Part 3: Making a final prototype design, manufacture and realisation of a final prototype, including tools and equipment and quality and accuracy

Part 4: Evaluating own design and prototype. Testing and evaluation.

Entry Requirements:

5 GCSEs at grade 5 or above.

6 or above in Art or Photography GCSE

Length of course:

A Level - 2 years.

Examination Board:

OCR.

Assessment:

Component 1: Personal investigation 60% of marks

Component 2: Externally set task 40% of marks

You are expected to have access to a digital camera, iPhone or similar...



Do you want to be part of one of the fastest growing industry sectors in the UK economy? Then you need to get involved in the creative and media industries, and studying Photography will take you there.

You will be introduced to a variety of experiences exploring a range of photographic techniques, styles and genres, including: portraiture, documentary, photojournalism, landscape and experimental imagery. You will develop technical understanding relating to the composition of images and an ability to explore the different elements of visual language.

Progression Routes – What’s in it for me?:

This course allows students to apply for a variety of Higher Education courses including Foundation Degrees, HNDs and BA degrees in Art, Design and different areas of Photography. Courses such as Documentary Photography, Photographic Art, Fashion Photography, Fine Art, Art Practice, Graphic Design, Animation, Media Studies, Multimedia and Lens Based Media, Film and Television. This course will develop the essential skills needed for study at a higher level and those needed for employment.

Key Features:

- 100% Practical and Contextual work (NO theory based exams)
- 100% Digital course including the development of digital image manipulation skills.

You will study aspects of professional practice within photography and art and design as part of the course. In the second year you will be given the opportunity to specialise within a specific area of photography allowing you to develop a focused

portfolio of work. This could support you gaining employment at an entry level directly from college.

All projects and assignments will focus on developing your own individual skills and creativity.

Additional activities such as trips and visits will be arranged throughout the course. These will be project and progression focused. These are optional activities and fees will be charged. Details will be available from the course leader.

This is a Level 3 Qualification equivalent to ½ an A Level.

It has some taught elements such as research skills, referencing, report writing etc. and then requires a large amount of independent project work and regular meetings with your supervisor.

What do I do?

- Choose an area of interest.
- Draft a title and aims of the project for formal approval.
- Plan, research and carry out the project.
- Deliver a presentation to a specified audience.
- Provide evidence of all stages of project development and production for assessment.

All projects must include a written report of between 1000 and 5000 words.

A project which consists solely of written work should be approximately 5000 words.

Projects where the majority of the evidence is provided in other formats should include a report which is at least 1000 words.

Why do it?

- A chance to get involved in something you are passionate about.
- Excellent evidence of skills.
- UCAS points.
- The possibility of reduced UCAS offers.



Entry Requirements:

5 GCSEs at grade 5 or above including Geography.

Length of Course:

A Level - 2 years.

Examination Board:

AQA.

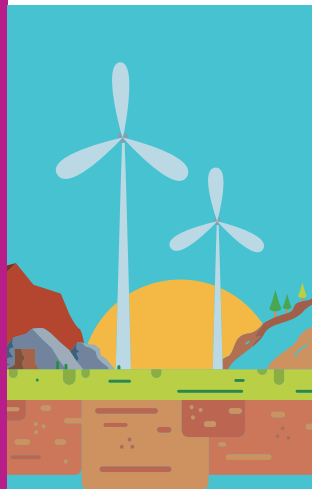
Assessment:

2 x exams of 2 hours 30 minutes - 40% each.
1x controlled assessment - 3-4000 words - 20%.

Contemporary geography is a subject which considers the relationship of human populations to each other over space and time.

You will enjoy this course if you take an interest in what is going on in the world and are able to see the implications and consequences of environmental/global issues. You must be prepared to carry out your own research, using both fieldwork techniques and secondary research using the internet, books and journals.

You must come to lessons prepared to argue your case and see issues from alternative viewpoints. All students will be expected to take part in at least 4 days of fieldwork activities over a range of scales, to prepare for the controlled assessment. The fieldtrips will be based around both urban and coastal locations.



Geography also considers our relationships with their physical environment at a variety of scales, from local to global.

Students will also have the opportunity to consider the values and attitudes of themselves and of others during this course.

What do we study?

Compulsory units of study:

- Water and carbon cycles.
- Global systems and global governance.
- Changing places.

Optional units of study

- Coastal systems and landscapes.
- Hazards.
- Contemporary urban environments.



Entry Requirements:

5 GCSEs at grade 4 or above including English or Maths. There is no requirement to have studied Health and Social Care previously.

Length of Course:

Two years, although an AS equivalent Certificate can be attained after one year.

Extended certificate
Diploma

Equivalent to one A Level.

Extended Diploma

Equivalent to 3 A Levels.

Examination Board:

Pearson.

Assignments:

Set and marked by teachers; verified by Pearson. Still the main form of assessment for all BTEC Nationals.

Tasks

Provide students with work-based challenges in timed, realistic work conditions.

Written exams

Students create written answers to practical questions in exam conditions.

The BTEC National Extended Certificate/Diploma/Extended Diploma in Health and Social Care (Level 3) qualification is suitable for anyone who is interested in progressing to a range of caring professions or pursue a higher education course in this field.

The New BTEC National course in Health and Social Care encourages:

- The ability to learn independently.
- The ability to research actively and methodically.
- The ability to be able to give presentations and be active group members.

There are a number of mandatory and optional units studied for the Extended Certificate, Diploma and Extended Diploma. Examples include:

- Human life span development (exam).
- Working in Health and Social Care (exam).
- Meeting individual care and support needs (internally marked assignment).
- Enquiries into Current Research in Health and Social Care (synoptic task – Diploma and Extended Diploma only).



There are a range of optional units. Examples include:

- Psychological Perspectives (internally marked assignment).
- Supporting individuals with additional needs (internally marked assignment).
- Caring for individuals with dementia (internally marked assignment).



The Extended Diploma has a mandatory unit involving 100 hours of work experience.

For the Extended Certificate there are 50 hours of optional work experience.

Progression:

Students have gone on to study: Midwifery, Nursing, Podiatry, Radiography, Paramedic and health care courses.

Entry Requirements:

5 GCSEs at grade 3 or below. A caring personality and interest in the subject.

Length of Course:

One Year

BTEC First Certificate in Health and Social Care – Equivalent to two GCSEs.

BTEC First Certificate in Children's Play, Learning and Development – Equivalent to two GCSEs.

Assignments:

Set and marked by teachers; verified by Pearson. Still the main form of assessment for all BTEC Nationals.

Tasks:

Provide students with work-based challenges in timed, realistic work conditions.

Written exams:

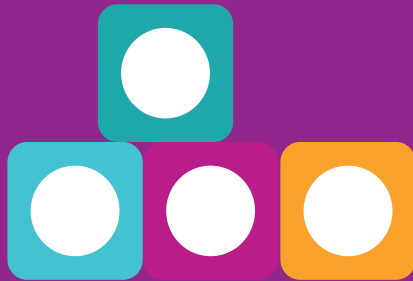
Students create written answers to practical questions in exam conditions.

Throughout the course students will complete a range of units including:

- The impact of nutrition on health
- Children's development through play
- Creative and therapeutic activities

Classes will be a mix of theoretical lessons and practical activities with assignments that involve both written work, role plays and some written exams.

This course is perfect for students who wish to boost their GCSE profiles in order to move onto some Level 3 courses such as Level 3 Health and Social Care or students who wish to move on to an apprenticeship in the relevant sector.



Students are expected to complete a day of relevant work experience every week throughout their time on the course.

This will be an opportunity for students to apply what they have learnt to the 'real world' and give them more practical skills.



Entry Requirements:

5 GCSEs at grade 5 or above including English and Maths with at least a 6 in a Humanities subject, preferably History.

Length of Course:

Two years.

Examination Board:

Edexcel, London.

Assessment:

Combination of examination and coursework, as detailed in the course content.

The Truth of History Is the Hope of the Future...

Course Content

Year 12:

Unit 1 - Russia, 1917-1991: From Lenin to Yeltsin. Examination (30%).

Unit 2 - The German Democratic Republic, 1949-1990. Examination (20%).

Year 13:

Unit 3 - The British Experience of Warfare 1790-1918. Examination (30%).

Unit 4 - Causes of the The Holocaust. Coursework (20%).



Key Skills

Throughout the History course every opportunity is given for students to cover key skills through a variety of teaching and learning styles including presentations, research, independent project work, problem solving and essay writing.

Expectations

A Level History is quite different to GCSE. You will need to undertake a wide range of independent reading and note taking. A high degree of personal motivation and a genuine commitment to the study of History are crucial ingredients for success at this level.



Entry Requirements:

5 GCSEs at grade 5 or above including English and Maths. No prior knowledge of law required.

Length of Course:

A Level - 2 years.

Examination Board:

OCR.

“Although Law requires a lot of commitment and hard work, it is an excellent choice of subject as it is interesting and challenging.”

“Law is a subject that never lets you lose interest.”

Course Content

English Legal System

How law is made and interpreted, the civil and criminal court system and the people who make decisions i.e. judges, juries and magistrates.

Nature of Law

The role law plays in society, balancing competing interests and

the relationship between legal rules and morality in a modern pluralist society.

Criminal Law

The general elements of criminal liability and how these apply to both fatal and non-fatal offences and property offences, including murder, GBH and theft.

Tort Law

The theory of Tort Law and its application in our relationships with one another, including negligence and nuisance.

Law Making

The unit includes exploring the mechanisms by which law is made by

Parliament and the courts along with how judges interpret Acts of Parliament.

Contract Law

Fundamentals of formation and discharge of a contract and appropriate remedies for breach.

Entry Requirements:

5 GCSEs at grade 5 or above including Maths and English.

This subject requires motivation, independent thought and regular background reading.

Length of Course:

Two years.

Examination Board:

OCR.

Assessment:

Students will cover three units, assessed by external examination.

There are no coursework units at A Level.

“The aim of the course is to explore some of the questions which people ask about life, God and the universe.”

Why should I study Law?

Law is involved in every aspect of our lives and relationships with one another. The relevance of studying law goes well beyond entering the legal profession. You will develop problem solving skills and an ability to argue an issue from both sides - useful skills for any career choice. Through studying law you will come to realise that there are no problems - only solutions!



Philosophy Unit:

- The forefathers of philosophy: Plato and Aristotle.
- Life after Death.
- The question of the Soul.
- Religious Experience.
- Philosophical debates such as: Is this the only reality? Does God exist?
- The problem of evil: How can God and evil exist?
- Meaningful Religious Language and 20th century perspectives.

Ethics Unit:

- Virtue Ethics
- Ethical systems including Christian Ethics, Natural Law, Utilitarianism and Kantian Ethics.
- Applied Ethics: Euthanasia, Sexual Ethics, Meta Ethics.
- Free Will, Determinism and Conscience.
- The Euthyphro dilemma.

Religious Thought Unit:

- Religious beliefs.
- Sources of wisdom and authority.
- Religious identity.
- Religion and Society.
- Historical developments in religious thought.



Skills:

Evaluation of evidence, assessing belief and actions, reasoned arguments, open minded attitude, logical thought processes, written and verbal communication.

Entry Requirements:

5 GCSEs at grade 5 or above including Maths and English. A grade 5 or above in GCSE Science is recommended.

This subject requires motivation, interest and regular background reading.

Length of Course:

Two Years.

Examination Board:

OCR

“This subject will not only teach you a lot about other people but about yourself, especially how to cope under exam pressure.”
“Psychology looks at the science behind behaviour but also gives lots of other explanations too.”

Year 12 Content:

We will look at 10 core psychological studies which will develop your understanding of how human behaviour can be explained. Each pair of core studies is linked to a key theme in psychology and includes both a classic and a contemporary study. The classic studies are 'landmark' pieces of research that have helped to shape the course of the subject and which all students of Psychology should be familiar with. The contemporary studies are more 'up-to-date' pieces of research that provide an understanding of the research currently undertaken by psychologists. You will also learn the research methods content.

Assessment:

The A Level is assessed by 3 exams at the end of the two years. Each exam is 2 hours long and includes a variety of question types from multiple choice through to extended questions. Much of the assessment will require you to apply your knowledge and understanding to a novel source.

10% of the marks will be assessing mathematics at level 2 or higher. Students must have at least a grade 5 equivalent for GCSE mathematics.

Year 13 Content:

We will focus on exploring applications of psychology and gain an insight into how theory can be applied to real-world situations. These areas of applied psychology will include issues with mental health, child psychology and criminal psychology. The second set of 10 core psychological studies will be learnt. You will also continue to develop your knowledge and understanding of research methods.



Entry Requirements:

5 GCSEs at grade 5 or above including Maths and English.

Length of Course:

Two years.

Examination Board:

AQA.

Assessment:

Paper 1 - Education with Theory and Methods (2 hrs).

Paper 2 - Families and households and Beliefs in society (2 hrs).

Paper 3 Crime and Deviance with Theory and Methods (2 hrs).

“Sociology is an eye-opening subject. It covers a range of topics so there will always be something of interest.”

Sociology is a social science which studies human beings and the way in which they behave in society.

Have you ever asked:

- Why is there an increase in single parent families?
- Why many children under achieve at school?
- Why people commit crime?
- Who controls the media?
- Why some groups live longer than other groups?
- Why the suicide rate is soaring?

Sociology attempts to answer these questions. The answers lie in the nature of society and the individuals within it.

Course Content

The course involves a great deal of active learning. You will find it enjoyable and stimulating and you will be expected to participate fully in discussions and research.

“A word of caution - it requires a lot of hard work and commitment.”



WHY?

The AQA specification for Sociology covers:

- The nature of sociology.
- The methods of research that Sociologists apply to their studies.
- In-depth study of subject areas like the family, health, education, deviance and crime, class, gender, ethnicity, beliefs.

Entry Requirements:

5 GCSEs grade 5 or above including English and Science.

Students must have grade 5 or above in GCSE PE or equivalent at Level 2

BTEC.

Students must be also playing and/or coaching regularly to a high level in and out of school hours.

Length of Course:

Two years.

Examination Board:

AQA.

Assessment:

Unit 3.1 Factors affecting participation in physical and sport.

Unit 3.2 Factors affecting optimal performance in physical activity and sport.

Unit 4 Practical performance in physical and sport.

All students are expected to take a lead role in the TENC sport programme.

Central to the study of PE is the development of; theoretical knowledge and understanding of the factors that underpin physical activity and sport, understanding of how physiological and psychological states affect performance, understanding the socio-cultural factors that influence involvement in physical activity and sport and understanding the role of technology in physical activity and sport.



In addition, how performers refine their ability to perform effectively in physical activity and sport, by developing skills and techniques and selecting and using tactics, strategies and/or compositional ideas, developing their ability to analyse and evaluate to improve performance and to understand the contribution which physical activity makes to health and fitness.

Component 1:

Factors affecting participation in physical activity and sport

Section A: Applied anatomy and physiology

Section B: Skill acquisition

Section C: Sport and society

How it is assessed

Written exam: 2 hours
35% of A Level

Component 2:

Factors affecting optimal performance in physical activity and sport

Section A: Exercise physiology and biomechanics

Section B: Sport psychology

Section C: Sport and society and technology in sport

How it is assessed

Written exam: 2 hours
35% of A Level

Component 3:

NEA (Non-Exam Assessment): practical performance in physical activity and sport

Students assessed as a performer or coach in the full sided version of one activity, plus written/verbal analysis of performance

How it is assessed

Internal assessment, external moderation

30% of A Level



Entry Requirements:

5 GCSEs at grade 3 or below.

Level 1/Level 2 Pass in BTEC Sport is recommended.

Interest in playing or leading sport activities.

Length of Course:

1 Year

BTEC Level 2 Technical Certificate in Sport & Activity Leaders is equivalent to three GCSEs.

Assessment:

Coursework, Practical, Online Exam and Controlled Assessment.

This course is suited to students who want to improve their GCSE achievement and study a full time timetable alongside Maths and English GCSE resits.

The course allows students to progress on to Level 3 Sport courses such as BTEC Level 3 Extended Certificate, Diploma or Extended Diploma in Sport or apprenticeships and/or work in the sport & fitness sector.



The course is ideal for students with a keen interest in sport and physical activity who enjoy learning through vocational or work related context.

All units covered are related to different skills, knowledge and behaviours desired by employers in the sport and recreation industry covering these key areas:

- Working in sport and activity leadership
- Leading sport and activity safely and effectively
- Leading sport and physical activity
- Coaching sport
- Developing skills for sport and activity leadership
- Delivering a sports event.

This qualification is a mixture of externally and internally assessed units, these include:

Unit 1	Leading Sport Safely and Effectively	External (online exam)
Unit 2	Working in Sport and Activity Leadership	External (controlled assessment)
Unit 3	Leading Sport and Physical Activity	Internal
Unit 4	Coaching Sport	Internal
Unit 5	Developing Skills for Sport and Activity Leadership	Internal
Unit 6	Getting Others Active Outdoors	Internal (optional)
Unit 7	Leading Different Groups	Internal (optional)
Unit 8	Delivering a Sports Activity Event	Internal



Entry Requirements:

4 GCSEs at grade 4 or above. Students should have taken BTEC Level 2 Sport or GCSE PE (or equivalent). A grade 5 or above in Science is recommended.

Length of Course:

Two years.

Examination Board:

Pearson BTEC.

Assessment:

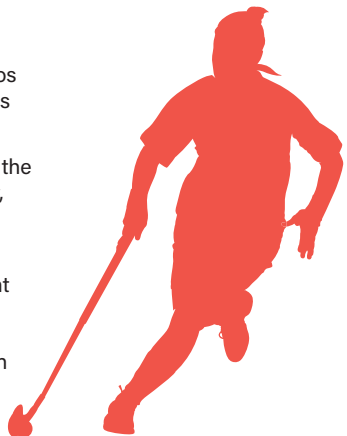
A mixture of examinations, coursework assignments and practical assessments.

“This course is ideal for people with an interest in sport, recreation or leisure who find learning and assessment through practical and coursework more effective than exams.”

BTEC Level 3 Nationals in Sport are for people with an interest in sport, recreation or leisure who wish to experience their learning through a vocational or work-related context. In all units there are vocational scenarios directly related to careers in sport and the different roles within.

This course will give the student a sound knowledge of the fundamental areas of sport science (namely physiology, analysis and coaching) whilst developing and applying their knowledge to a variety of sporting areas.

Students have the opportunity to study sport at different depths by choosing either the Extended Certificate (equivalent to one A-Level), Diploma (2 A-Levels) or Extended Diploma (3 A-Levels). All three courses are an excellent stepping stone to the wide variety of careers in sport or for further study at university.



Areas of study include:

Extended Certificate:

- Anatomy & physiology
- Professional development in sport.
- Sports leadership
- Fitness training

Diploma:

- Fitness testing
- Business of sport
- Skill acquisition
- Practical sport performance

Extended Diploma:

- Sports event organisation
- Coaching
- Sports injury management

Entry Requirements:

5 GCSEs at grade 5 or above including a minimum of a 6 in your chosen language.

Length of Course:

Two Years.

Examination Board:

Edexcel.

Assessment:

Provide students with work-based challenges in timed, realistic work conditions.

Written exams:

By written and oral examination - 3 in total. The examinations cover the four skills of listening, reading, writing and speaking. You must be prepared to participate fully during the lessons in your chosen language, carry out independent research and attend compulsory lessons with language assistants.

Students will study a range of literary texts and films as well as explore key themes and topics including:

French:

- Family.
- Education.
- The world of work.
- Music, media and culture.
- France as a multicultural society.
- The Occupation and Resistance.

German:

- Nature and the environment.
- Education.
- World of work.
- Music, media and culture.
- Germany as a multicultural society.
- The reunification of Germany.

Spanish:

- Family
- World of work
- Music, media and culture
- Spain as a multicultural society
- The transition from dictatorship to democracy
- The impact of tourism



Skills:

Research, essay writing, reading comprehension, listening comprehension, ICT, translation from and into the target language, literature analysis, role play, debate and discussion, presenting a topic orally.



Entry Requirements:

You need to show an interest in the music industry and already be able to play an instrument or sing. The ability to read music is not essential, but enthusiasm and commitment to working hard is.

Length of Course:

Two years.

Examination Board:

Rock School.

Assessment:

You will pick one unit from either performing or composing music which will lead to a final assessment.

Each unit will be assessed both by practical and written assignments. Written assignments will include reflective and self-evaluative tasks.

The Contemporary Music programme leads to a Level 3 qualification and is designed for anyone who may be contemplating a career in the Music Industry. It will help you gain valuable insights into the industry and to develop useful skills and relevant background knowledge for further study. It is an introductory practically based vocational programme which will develop your performing and composing skills using instruments and industry standard recording facilities in the department's recording studio.

“...gain valuable insights into the industry and to develop useful skills and relevant background knowledge for further study.”

How will I study?

You will study all practical aspects of your course within one of our music work spaces, often working collaboratively with other students. You will also receive support on a regular basis to review progress. The course will consist of 1-2 taught hours per week, plus a minimum of two hours of practical supported self study. Depending upon your unit choice, you will be required to work collaboratively with a partner or by yourself to produce a body of music to be performed in front of an audience.

Aims:

To provide students with a broad background of the Music Industry; enable students to develop the musical skills required to facilitate progress and further study; enable students to make an assessment of their own strengths, areas for development and aptitude for work in the sector; develop students' skills to become independent performers and composers.



Entry Requirements:

5 GCSEs at grade 5 or above including Maths and English. GCSE Dance is advisable but not essential.

Length of Course:

Two years.

Examination Board:

AQA.

Assessment:

All examinations.

This course is particularly suitable for students who wish to study dance at a higher level.

A Level Dance provides students with the opportunity to gain experience of performance and choreography and to develop critical thinking about Dance.

Component 1:

Performance and Choreography

- Solo performance linked to a specified practitioner within an area of study
- Performance in a quartet
- Group choreography

Assessment:

- Practical exam
- 80 marks
- 50% of A Level



Component 2:

Critical Engagement

- Knowledge, understanding and critical appreciation of two set works.
- One compulsory set work within the compulsory area of study.
- One optional set work within the corresponding area of study, from a choice of four.

Assessment:

- Written exam: 2 hours 30 minutes
- 100 marks
- 50% of A Level



Exam questions - Two sections:

- **Section A:** Short answer questions (25 marks) and one essay question (25 marks) on the compulsory set work/ area of study.
- **Section B:** Two essay questions on the second set work/ area of study (25 marks for each essay).

Entry Requirements:

5 GCSEs at grade 5 or above including Maths and English. GCSE Music (preferably grade 5 or above) or grade 5 Theory of Music.

Length of Course:

Two years.

Examination Board:

AQA.

Assessment:

Performing - assessed throughout both courses with a final recital at the end of each year.

Composing - assessed coursework in AS, examination and/or coursework in A2.

Listening and Analysing - listening and written examinations papers for both AS and A2.



A Level Music aims to develop your understanding and appreciation of a wide variety of music, from classical to modern film and TV music.

Performing

there are a wide range of opportunities for solo and ensemble performance throughout the course which are logged and go towards your final mark.



Listening

you will develop your historical knowledge of music by studying two areas of music in depth, and be able to identify details of music in different styles.

“...develop your historical knowledge of music by studying two areas of music in depth, and be able to identify details of music in different styles.”

Music is a very demanding and enjoyable course.

You should already have a commitment to the subject and have reached a good performance standard (by the end of A2 you should be working to a minimum of Grade 6 standard).

You will be expected to take an active part in performances and ensembles at Ferrers.

Entry Requirements:

5 GCSEs at grade 5 or above including Maths and English and Music. Grade 6 or above in Music. You must be able to play an instrument

Length of Course:

Two years.

“...delivered through a mixture of practical and theoretical sessions.”

“Learning how sounds are captured, created, edited and arranged for commercial recordings.”

The course is made up of four units, three compulsory and one optional until as shown below. It covers a wide variety of topics from practical harmony and theory skills, performance skills, Music Industry skills and Music technology. It is vital you are a confident player of an instrument to be able to complete the compulsory ensemble music unit. Assessment is through both practical tasks set in school and linked to work-related scenarios as well as pre-release based tasks set externally by the exam board.



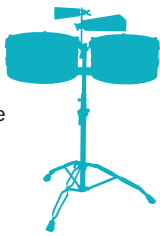
Why choose Music Technology?

Music Technology plays a key role in music across the world. If you have an interest in popular music, have good ICT skills and a working knowledge of music then this course could be for you.

Compulsory units:

Ensemble Music Performance

- As a musical ensemble (min 3, max 8) develop skills and techniques in rehearsal and performance
- You will choose three songs from a list which you will then rehearse and perform to an audience
- Submission includes a video of a 6-15 minute performance



Practical Music Theory and Harmony

- Learn and develop knowledge and understanding of music theory and how it can be applied to practical scenarios
- Explore how rhythm, pitch, tempo and expression are communicated in different forms of notation.
- Learn how scales are constructed and how to use these and chords to compose
- Explore these concepts as a performer, songwriter, producer, composer and arranger

Professional Practice in the Music Industry

- Learn what it is to be a professional musician and how to put a bid forward for work
- Understand how professional behaviour is absolutely key to the music profession and understand what is meant by 'professional practice'
- Find out about financial management, effective interpersonal skills and importance of working with others
- Assessment: You will have an industry specific scenario for which you will research then carry out a written task

Choose one of these two optional units:

Solo Performance

- Find out about financial management, effective interpersonal skills and importance of working with others
- Assessment: You will have an industry specific scenario for which you will research then carry out a written task

Music Software Skills

- Explore and carry out audio editing, control MIDI data and use multitrack recording software
- Learn the operations and functions of music software
- Create a multi-track recording using advanced processes

Entry Requirements:

5 GCSEs at grade 4 or above including Maths and English and Drama or Performing/Expressive Arts or a merit in BTEC.

Length of Course:

8 Units of which 6 are compulsory and 2 of which you choose from a range of specialist areas.

Examination Board:

Edexcel.

Assessment:

Practical assessments and set tasks. Performance. Written coursework in the form of actors logs. Total GLH - 720 over 2 years.

Progression:

Students can go on to work in the theatre or be involved in the entertainment industry. Students can apply to university or Drama School to study Acting, Performing Arts and Drama with this qualification. Drama if they have this BTEC and additional qualifications.

This is a practical and work related course, which is broadly equivalent to two A Levels, taking up both the single and double option blocks.

All students will be assessed on the following core units:

- Investigating practitioners work.
- Skills and techniques for live performance.
- Group performance workshop.
- Performing arts in the community.
- Individual performance commission.
- Final live performance to an audience.

You will take a further two units in each year such as Physical Theatre, Theatre for Children, Movement and Acting Styles.

Opportunities

Previous BTEC work has included performances at the Derngate Theatre, work with local infant and secondary schools, showcases, musicals, workshops with Frantic Assembly and last year the BTEC group took part in the National Theatre Connections 500, performing 'Citizenship' by Mark Ravenhill at the Connections Festival at the Royal Theatre.



Entry Requirements:

5 GCSEs at grade 4 or above including English and a Drama or Performing/Expressive Arts or a merit in BTEC.

Length of Course:

13 units – 7 of which are compulsory and 6 of which you choose from a range of specialist areas.

Examination Board:

Edexcel.

Assessment:

Practical assessments and set tasks. Performance. Written coursework in the form of actors logs. Total GLH - 720 over 2 years.

Progression:

Students can go on to work in the theatre or be involved in the entertainment industry. Students can apply to university or Drama School to study Acting, Performing Arts and Drama with this qualification. Drama if they have this BTEC and additional qualifications.

This is a practical and work related course, which is broadly equivalent to three A Levels, using the Single, Double and Triple option block.

All students will be assessed on the following core units:

- Investigating Practitioners work.
- Skills and Techniques for Live Performance.
- Group Performance Workshop.
- Performing Arts in the Community.
- Individual Performance Commission.
- Final Live Performance to an Audience.
- Progression Opportunities in Performing Arts.

You will take a further six units in each year such as Physical Theatre, Theatre for Children, Movement, Improvisation, Musical Theatre and Acting Styles.

Opportunities

Previous BTEC work has included performances at the Derngate Theatre, work with local infant and secondary schools, showcases, musicals, workshops with Frantic Assembly and last year the BTEC group took part in the National Theatre Connections 500, performing 'Citizenship' by Mark Ravenhill at the Connections Festival at the Royal Theatre.



Entry Requirements:

5 GCSEs at grade 5 or above including Maths and English. GCSE is strongly recommended.

Length of Course:

Two years.

Examination Board:

Edexcel.

Assessment:

3 components including written and practical coursework, practical examination and written examination.

“Interesting and challenging.”

“...unlike other subjects there is a chance to get up and show what you have learnt.”



What will you need?

- An interest in plays and their performance.
- A willingness to learn, to make mistakes and take risks.
- The ability to work creatively and co-operatively in a group.
- Commitment and a capacity for hard work.

What will you learn?

- How to understand, appreciate and perform plays.
- How the theatre and its audiences have evolved.
- How to create original drama.
- How key practitioners work and influence styles of drama.

What will you get?

- An A Level which is recognised by all universities and which combines well with all subjects.
- Increased skills and confidence, useful for all careers.
- An appreciation and understanding of one of the oldest and most accessible of the art forms.
- Self-motivation, responsibility, maturity.
- An interest for life.
- Team work and problem solving skills, essential for any future career.



“An enjoyable mixture of writing, reading, watching and doing.”

“Lots of fun but serious work is required.”

Entry Requirements:

5 GCSEs at grade 5 or above including Maths and English or OCR National/ BTEC Diploma at merit or above.

Length of Course:

Two years.

Examination Board:

AQA.

Assessment:

Examined.

“For students who wish to take a more academic route with their studies GCE Business Studies enables students to develop creative and analytical thinking through investigating businesses; their products, services, customers and day-to-day activities.”

The course is only assessed through external examination, with no coursework and the breakdown is as follows:

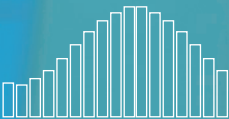
- 1 What is business?
- 2 Managers, leadership and decision making.
- 3 Decision making to improve marketing performance.
- 4 Decision making to improve operational performance.
- 5 Decision making to improve financial performance.
- 6 Decision making to improve human resource performance.
- 7 Analysing the strategic position of a business.
- 8 Choosing strategic direction.
- 9 Strategic methods: How to pursue strategies.
- 10 Managing strategic change.

Paper 1 - Will assess all of the content above in a 2hr written exam. 3 sections consisting of multiple choice, short answer and essay style questions.

Paper 2 - Will assess all of the content above in a 2hr written exam. 3 data response questions, broken into 3 or 4 questions each.

Paper 3 - Will assess all of the content above in a 2hr written exam. 1 case study consisting of 6 questions.

Each exam is weighted the same amount. Upon successful completion of these units students will gain an A Level at the awarded grade.



Entry Requirements:

5 GCSEs at grade 3 or below.

Length of Course:

One year.

Examination Board:

Pearson.

Assessment:

Internally/Externally assessed coursework and an externally examined unit.

“BTEC Firsts motivate learners, and open doors to progression into further study and responsibility within the workplace.”



BTECs are vocationally related qualifications, where learners develop knowledge and understanding by applying their learning and skills in a work-related context. Additionally, they are popular and effective because they engage learners to take responsibility for their own learning and to develop skills that are essential for the modern-day workplace. These skills include: team working; working from a prescribed brief; working to deadlines; presenting information effectively; and accurately completing administrative tasks and processes.

The students will study 8 units over the course of the year and undertake work experience:

Unit 1: Enterprise in the Business World.

Unit 2: Finance for Business (Externally assessed exam).

Unit 3: Promoting a Brand.

Unit 4: Principles of Customer Service.

Unit 6: Introducing Retail Business.

Unit 8: Recruitment, Selection and Employment.

Unit 9: Principles of Marketing (Externally assessed exam).

Unit 13: Financial Planning.

Entry Requirements:

5 GCSEs at grade 5 or above including Maths and English or OCR National/BTEC Diploma at merit or above.

Length of Course:

Two years.

Examination Board:

Pearson.

Assessment:

Internally/Externally assessed coursework and an externally examined unit.

“...for learners who are interested in learning about the business sector alongside other fields of study, with a view to progressing to a wide range of higher education courses, not necessarily in business-related subjects.”

BTEC Business enables students to develop creative and analytical thinking through investigating businesses: their products, services, customers and day-to-day activities.

The Diploma is for learners who are interested in learning about the business sector alongside other fields of study, with a view to progressing to a wide range of higher education courses, not necessarily in business-related subjects. This qualification can also be used to progress to Higher Apprenticeships.

Students study a variety of units that give a broad understanding of what it is like to operate within certain business parameters.

Extended Certificate

- Exploring business.
- Developing a marketing campaign.
- Personal and business finance.
- Recruitment and selection.

Diploma

- Managing an event.
- Team building in business.
- International business.
- Principles of management.



Entry Requirements:

5 GCSEs at grade 5 or above including Maths and English.

Length of Course:

Two years.

Examination Board:

OCR.

Assessment:

This is a linear qualification whereby all assessments are taken at the end of the two year course. Please see the grid below for further details on assessment.

Computer Science is a practical subject where students can apply the academic principles learned in the classroom to real-world systems. It's an intensely creative subject that combines invention and excitement, and can look at the natural world through a digital prism. The aims of this qualification are to enable learners to develop:

- An understanding and ability to apply the fundamental principles and concepts of computer Science, including: abstraction, decomposition, logic, algorithms and data representation.
- The ability to analyse problems in computational terms through practical experience of solving such problems, including writing programs to do so.
- The capacity to think creatively, innovatively, analytically, logically and critically.
- The capacity to see relationships between different aspects of Computer Science.
- Mathematical skills.



Assessment Overview - AS Level

Computing Principles

- 70 marks 1 hour and 15 minutes written paper
- 50% of total AS level

Algorithms and problem solving

- 70 marks 1 hour and 15 minutes written paper



Assessment Overview - A2 Computer Science

Computing Principles

- 140 marks 2 hours and 30 minutes
- 40% of total A Level

Algorithms and problem solving

- 140 marks 2 hours and 30 minutes written paper
- 40% of total A Level

Programming project

- 70 marks Non-exam assessment
- 20% of total A Level



Entry Requirements:

4 GCSEs at grade 5 or above including Maths and English. Ideally students will have taken GCSE ICT or equivalent.

Length of Course:

Two years.

Examination Board:

Edexcel.

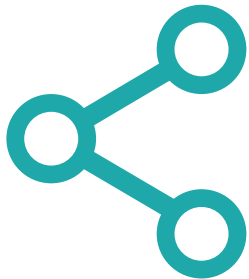
Assessment:

Coursework, theory and practical.

Edexcel BTEC Level 3 National Extended Certificate in Information Technology has a varied style of study and this qualification is designed for learners who are interested in an introduction to the study of creating IT systems to manage and share information, alongside other fields of study, with a view to progressing to a wide range of higher education courses, not necessarily in IT.

This course will give the student a sound knowledge of the fundamental areas of designing, creating and maintaining database systems together with the use of social media in business.

The Certificate is equivalent to 0.5 of an A Level qualification and the Extended Certificate is equivalent to 1 A Level.



Certificate:

The two mandatory units covered are:

Creating Systems to Manage Information (databases) - External assessment.

Using social media in business - Internal assessment.

Extended Certificate:

The mandatory unit covered is:

Information Technology Systems - External assessment.

Option choice from Data Modelling or Website Development - Internal assessment.



Entry Requirements:

You need to have a strong interest in acquiring the skills and knowledge which will prepare students for a career in the hair and beauty industry or for further study. We are looking for 4 GCSEs at 3 or above.

Length of Course:

One year.

Examination Board:

City and Guilds.

Assessment:

Hair and Beauty Diplomas will be internally assessed. Assessment for practicals is done in a realistic learning environment, on clients.

Theory assignments will be carried out and assessed for each unit.

The Hair Diploma will include the following units:

- Follow health and safety in the salon.
- Client care and communication in beauty related industries.
- Client consultation for hair services.
- Create an image based in a theme within the hair and beauty sector.
- The art of dressing hair.
- Shampoo and condition the hair and scalp.
- Cut women's hair.
- Provide scalp massage.

Progression:

Hair and Beauty Diplomas Level 3 or other Level 3 subjects.

Career pathways from Hair and Beauty Diplomas lead to salon based work, fashion, health and fitness, well-being, retailing, paramedical treatment, film and television, complimentary and alternative medicine, care and the creative industries.

The Beauty Diploma will include the following units:

- Follow health and safety in the salon.
- Client care and communication for beauty services.
- Provide facial skincare.
- Provide manicure treatments.
- Provide pedicure treatments.
- Apply make up.
- Provide nail art.
- Display stock to promote sales in salon.



Entry Requirements:

You need to have completed a level 2 hair and beauty course or equivalent, as well as a strong interest in acquiring the skills and knowledge which will prepare you for a career in the hair and beauty industry. We are looking for 4 GCSEs at 4 or above including Science and English.

You must be motivated and enthusiastic about the hair and beauty industry.

Length of Course:

Two years.

Examination Board:

City and Guilds.

Assessment:

The Hair and Beauty Diplomas will incorporate internal assessment. Assessment for practicals is done in a realistic learning environment, on paying clients. Theory assignments will be carried out and assessed for each unit.



Progression:

Further studies in hair and beauty at university.

Career pathways from Hair and Beauty Diplomas lead to salons, fashion, health and fitness, well-being, retailing, paramedical treatment, film and television, complimentary and alternative medicine, care and the creative industries.

The Hair Diploma will include the following units:

- Monitor and maintain health and safety practice in the salon.
- Consultation support for colleagues on hair services.
- Cut women's hair to create a variety of looks.
- Style and dress hair using a variety of techniques.
- Cut men's hair to create a variety of looks.
- Display stock to promote sales in a salon.
- Scalp Massage Services.
- Salon Reception.
- Creative hairdressing design skills.
- Promote and sell products to clients.
- Colour and lighten hair

The level 3 Beauty Therapy will include the following units:

- Monitor and maintain health and safety practice in the salon.
- Client care and communication within beauty related industries.
- Promote and sell products and services to clients in the salon/reception.
- Provide body massage.
- Provide Indian head massage.
- Apply stone therapy massage.
- Provide Self-tanning

Entry Requirements:

5 GCSEs at grade 5 or above including English and a 7 in mathematics. A grade 6 may be accepted with support of the Head of Maths at the home school.

Length of Course:

Two Years.

Examination Board:

Edexcel.

Assessment:

3 formal written examinations.
Paper 1 – Pure mathematics
Paper 2 – Pure mathematics
Paper 3 – Mechanics/
statistics combined.

This course is designed for students who enjoy Mathematics and are looking for a challenge. Students need to have a real flair for mathematics and be able to work at a sustained pace throughout the 2 years.

Pure Content:

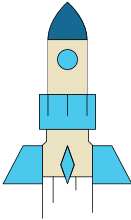
- Algebra
- Differentiation
- Trigonometry
- Graphs
- Vectors
- Sequences and series.

Statistics Content:

- Collecting and Representing Data
- Probability
- Discrete Random Variables
- Hypothesis Testing

Mechanics Content:

- Kinematics, Motion and Equations of motion
- Forces and Newtons Laws



Core Maths:

This is a separate two year course designed for students not wanting to take the A level mathematics but wishing to continue with studying mathematics in the sixth form. It is equivalent to an AS level and is taught over two years. It is particularly recommended for those requiring higher skills in data handling and really helps those studying science subjects, geography or psychology. It is an excellent support for many university courses.

Entry Requirements:

5 GCSEs at grade 5 or above including English and an 8 in mathematics.

Length of Course:

Two years.

At the end of year 1 students will have completed A Level Mathematics.

At the end of year 2 students will have completed A Level Further Mathematics.

Examination Board:

Edexcel.

Assessment:

At the end of year 1 there are three examinations – please refer to the A Level Mathematics details.

At the end of year 2 there are 3 examinations.

Two of the examinations test the Further Pure content.

Two of the examinations are option units which cover more Further Pure, Mechanics, Statistics or Decision Maths.

Combined course resulting in the award of A Level Mathematics and A Level Further Mathematics

Mathematics is an interesting and challenging subject and is a useful A Level to have for a range of careers and degree courses.

Content and Structure:

This course is designed for students who enjoy mathematics and are looking for a challenge.

Students need to have a real flair for mathematics and be able to work at a sustained pace throughout the 2 years.

Further Pure Content:

- Proof
- Complex numbers
- Matrices,
- Further algebra and functions
- Further calculus
- Further vectors
- Further algebra and functions
- Polar coordinates
- Hyperbolic functions
- Differential equations

Options:

- 4B: Further Statistics 1
- 4C: Further Statistics 2
- 4D: Further Mechanics 1
- 4E: Further Mechanics
- 4F: Decision Mathematics
- 4G: Decision Mathematics 2



Entry Requirements:

5 GCSEs at grade 5 or above including Maths with a 6 in English Assessment: Final examination with a 20% non-examined unit.

Length of Course:

Two years.

Examination Board:

OCR.

Assessment:

Coursework and final examination.

A Level English can take you anywhere. Universities and employers need people with excellent skills of analysis and communication.

Students benefit from experiencing a range of teaching styles as they explore and develop their understanding of how both literary and non-literary texts work.

Studying English Language and Literature allows you to:

- Study a wide range of interesting and engaging literary and non-fiction texts.
- Use literary and linguistic methods to study in a clear and coherent way.
- Explore and make connections between texts using the analytical concepts and methods you learn during the course.
- Demonstrate knowledge and understanding of narrative techniques acquired through prose study in the production of original creative writing.
- Choose a “free-choice” of text for comparison with a set text, encouraging you to develop your independent interests in language and literature.
- Produce original non-fiction writing for coursework, building on your knowledge of non-fiction genres.



Deepen your understanding of the use of English Language and develop skills of literary analysis through creative engagement with a range of texts.

Entry Requirements:

5 GCSEs at grade 5 or above including Maths with a 6 in English.

Length of Course:

Two years.

Examination Board:

OCR.

Assessment:

Examination and Coursework.

“The person, be it gentleman or lady, who has not pleasure in a good novel, must be intolerably stupid.”

Jane Austen, Northanger Abbey

The course aims to develop increasingly confident, independent and reflective readers of a range of texts as they pay close attention to how narrative works in text; make connections across texts; explore genre through the study of drama, prose and poetry; extend independent reading and extend their awareness of different critical method and readings.

Set authors include: Shakespeare, Marlowe, Chaucer, Tennyson, Rossetti, Austen, Woolf, Fitzgerald and Steinbeck. A range of texts are available for study according to the choices of individual students.



Essentials for Success

- A creative and coherent writer.
- An analytical and enthusiastic reader.
- A confident speaker.
- Able to construct a concise argument.
- Willing to give presentations to your peers.



A wide variety of teaching methods is used during the course, including theatre and study trips where available. Students are encouraged to use the library resource centres of all three schools and the internet for research.

Reading, wider reading and essay writing are essential components of study. This course will appeal to students who have an interest in reading, discussing and expressing their views on a wide range of issues.

Course Overview:

Component 1:

- Shakespeare
- Drama and Poetry Pre 1900
- Closed Text

Component 2:

- Close reading in chosen topic
- Comparative and Contextual Study from chosen topic area
- Closed Text

Component 3:

- Critical Piece OR re-creative writing piece with commentary
- Comparative Essay
- Non Examined Assessment (20% of final grade)

Entry Requirements:

A minimum of 5 GCSEs grade at 5 or above, including English and a creative arts subject.

Length of Course:

Two years.

Examination Board:

AQA.

Assessment:

Exam and project.

Thinking of a career in television and radio, film and video, digital media, computer games, journalism, writing and publishing, PR and media...?

What will I study?

The theoretical framework which comprises of:

- Media Representation
- Media Language
- Media Audiences
- Media Industries

The context within which media texts are produced:

- Social
- Cultural
- Historical
- Political

Across the following forms:

- Audio-visual (TV, film, radio, advertising & marketing, video games, music video).
- Online (social media, video games, advertising, newspapers, magazines).
- Print (magazines, newspapers, advertising and marketing).



How will you be assessed?

Paper 1
35% of A Level
Written Exam 2hrs

Questions will focus on issues and debates in the media. A topic will be released in advance of the exam. Students will be expected to use relevant elements of the theoretical framework in order to explore the ideas in the paper.

Practical Project
30% of A Level Creating a cross-media product

A choice of topics relating to a given theme. This will be created at the beginning of the second year. It is teacher assessed and AQA moderated.

Paper 2
35% of A Level
Written Exam 2hrs

Analysis of media products using the theoretical framework with an expectation to demonstrate understanding of the contexts in which the products were created.



"I like the independence that the 6th Form gives you and its so different to Year 11. The staff care about you and your grades."

Imogen

"6th Form is a really friendly environment with time and space to do your work to a high standard. Staff treat you with respect and are very helpful and supportive."

Ben

"I love the 6th Form! It's a relaxing environment and even with a heavy workload you can concentrate and focus so much more."

Abbie

"The staff, both teaching and support are so lovely and supportive. I am really enjoying 6th Form even though the workload is heavy."

Jack

"The teachers are very hands on, they look to do all they can for each individual student. They want everyone to reach their potential. They provide all the sources that you will need to succeed and get the highest grades. In my opinion there is nothing more the teachers could possibly do, they give every student the best platform to get the best grades."

Taylor

What the students say...

THE EAST NORTHAMPTONSHIRE COLLEGE

FERRERS ▪ HUXLOW ▪ RUSHDEN

Mrs Helen Prince

The Ferrers School
01933 313411

Mrs Jackie Holmes
(Dean Ashurst – Acting
Head of Sixth)

Huxlow Science College
01933 650496

Mr Paul Chapman

Rushden Academy
01933 350391



The East Northamptonshire College



TENC@tenonline



www.tenonline.co.uk

